



Balnamill Little Learners

Est.2024

# PRE SCHOOL HANDBOOK



## Balamill Little Learners

Est.2024



Welcome to Balamill Little Learners, nestled in the heart of Balnamore village and situated in the grounds of Balnamore Primary School. We are thrilled to welcome you and your family.

At Balamill Little Learners, our vision is simple yet profound: to provide a nurturing environment where children can flourish and grow, laying a solid foundation for their educational journey ahead. We are committed to seamlessly transitioning our pupils from pre-school into primary one, ensuring a smooth and successful start to their formal education.

Our core purpose is to create a love for learning, curiosity, and creativity in each child. We believe in the importance of early years education as a critical stage in a child's development, shaping their cognitive, social, emotional, and physical skills. Through play-based learning, hands-on activities, and engaging experiences, we aim to ignite a lifelong passion for learning in our little learners.

At Balamill Little Learners, our experienced team of staff and pastoral team are dedicated to creating a child-centered environment where every child is valued, supported, and celebrated. Our team is committed to understanding and addressing the individual needs of each pupil, ensuring that they feel safe, respected, and empowered to reach their full potential.

We take great pride in our strong links between the Pre-School, Balnamore Primary School, and the wider community. These connections enable us to provide a holistic approach to education, enriching our pupils' learning experiences both inside and outside the classroom. By allowing collaboration, communication, and partnership, we create a supportive network that enhances the educational journey of every child.

We invite you to join us on this exciting adventure at Balamill Little Learners. Together, we will lay the groundwork for a bright and promising future for your child.

Welcome to our preschool family!

Letter from Leader	Positive Behaviour
Application Process	Additional Needs
My Pre School	Pastoral Care
Structure & Organisation	Health and Safety
Our Vision and Values	Safeguarding & Child Protection
Our Learning Environment	Admissions and Uniforms
The Great Outdoors	Healthy Snacks
Curriculum	School Funds
Record Keeping / Assessment	Birthdays
Our Pre-School Family	Pre-Pre School
Policies & Procedures	A Happy Start

# Letter from Leader

**Balnamill Little Learners**

80 Balnamore Road

Balnamore

BALLYMONEY

Co. Antrim

BT53 7PT

Dear Parent/Guardian,

I am delighted to welcome to you and your child as you embark on this exciting journey with us at Balnamill Little Learners.

Our morning session, running from 9:00 am to 12:00 pm, promises enriching learning experiences within a nurturing environment for your child.

Enclosed within this prospectus, you will find essential information detailing our policies, procedures, and expectations.

Uniforms and induction packs will be available for collection from the pre-school. Further details regarding collection dates and times will be communicated to you in due course. Your child's induction time and start date will be included in the induction packs for your reference.

I am eager to collaborate with you and your child, laying the foundation for a bright and promising future together. At Balnamill Little Learners, we are committed to providing a supportive and nurturing learning environment where every child can thrive and reach their full potential.

Once again, welcome to our pre-school family! I am excited to embark on this journey with you and look forward to getting to know you and your child better in the coming days.

Yours sincerely,

Laura McComb  
Pre-School Leader  
Balnamill Little Learners



## Application Process

From Monday 6th January, Balnamill Little Learners will be accepting applications for the academic year 2025/2026. To be eligible for enrolment, children must have birthdays falling between 2nd July 2021 and 1st July 2022 inclusive.

Parents can conveniently apply online via our pre-school website at [www.balnamilllittlelearners.com](http://www.balnamilllittlelearners.com). Our streamlined online application process allows you to register your child from the comfort of your home, ensuring a hassle-free experience.

In addition, we warmly invite you to attend our Open Day at Balnamill Little Learners in December. This is an excellent opportunity for families to explore our learning environment, meet our dedicated team, and learn more about our curriculum and early childhood education approach. We believe seeing our pre-school in person will give you a true sense of what makes us special.

We have established Admissions Criteria to ensure that every application is treated fairly. You can find detailed information on our website. We encourage all parents to review this criteria carefully before submitting an application to ensure a smooth process.

**Please note that we operate on a limited number of spaces, with only 16 fully funded pre-school places available at Balnamill Little Learners. Applications will close at 4pm on Friday 31st January.**

123



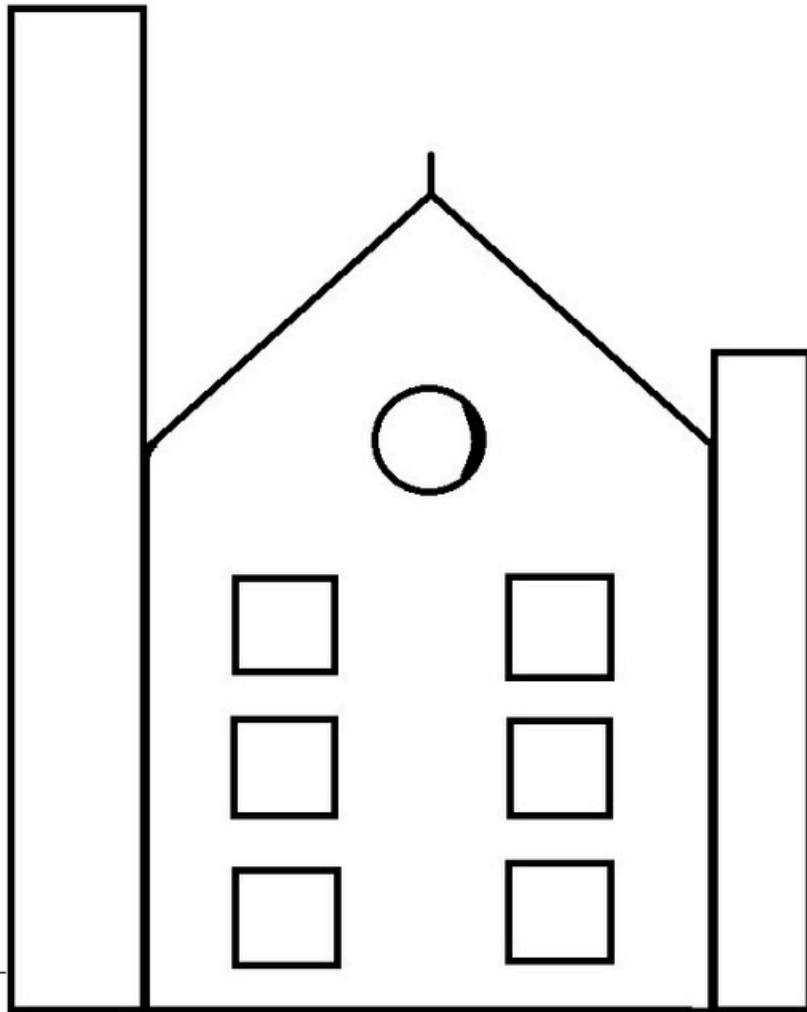
ABC

We encourage interested families to submit their applications promptly to secure a place for their child at Balnamill Little Learners. Should you have any questions or require further information, please do not hesitate to contact us. We look forward to welcoming your child into our pre-school community and embarking on this exciting educational journey together.





# My Pre School Picture



We know that a school prospectus can be quite the adventure, so we've added a special activity just for you. Unleash your creativity and make this book your own!

On this page, you'll find our school logo waiting to be brought to life with your favourite colours. Whether you choose bold and bright hues or soft shades, let your imagination soar as you colour in our logo and make it uniquely yours. It's a fun way to start your journey with us and add some excitement to your first day at pre school. So grab your crayons and get started!





## Structure and Organisation

The Committee will oversee the overall management and operation of the pre-school.

Pre-school staff will be responsible for planning and implementing the curriculum, as well as helping with activities to improve the child's development.

## Type of Provision

Pre-School

## Age Range

3-4 years old

## Numbers

16



The pre-school offers part-time sessions five days a week, providing flexibility for parents and ensuring regular engagement for children. With sessions running from 9:00 am to 12:00 noon, each morning is structured to maximise learning opportunities while accommodating the developmental needs and attention spans of young learners. This schedule allows for a balance of structured activities, free play, and social interaction in a nurturing environment.

At Balnamill Little Learners, our vision is to create a nurturing and inclusive environment where every child feels valued, inspired, and empowered to reach their full potential. We believe in creating a love for learning through play-based experiences that stimulate curiosity, creativity, and critical thinking skills.

### Our Pre-School Values



**Respect:** We value and honour the dignity, beliefs, and opinions of every individual within our school community, promoting kindness, empathy, and consideration for others.

**Resilience:** We encourage resilience, perseverance, and a growth mindset, equipping pupils with the skills and mindset to overcome challenges, learn from setbacks, and adapt to change with confidence and determination.

**Community:** We value community spirit, inclusivity, and active participation, creating a sense of belonging, pride, and responsibility for the well-being and success of our school community.

**Inclusion:** We embrace diversity and promote a culture of belonging where every individual feels valued, respected, and supported. We celebrate differences, cultivate empathy, and strive to create an inclusive environment where all pupils, staff, and families are welcomed, accepted, and empowered to participate fully in school life.

**Nurturing:** We prioritise the social, emotional, and holistic development of every child, providing a nurturing and supportive environment where they feel safe, cared for, and encouraged to explore, learn, and grow.

**Happiness:** We believe that happiness is essential for well-being and success in learning. We cultivate a positive and joyful atmosphere where laughter, play, and enthusiasm are encouraged.



### Commitment to Equality and Diversity

We are dedicated to promoting equality, diversity, and inclusion in all aspects of our school community. We celebrate the uniqueness of each child and family, recognising that diversity enriches our learning environment and enhances our understanding of the world. We are committed to providing equal opportunities for all children regardless of their background, ethnicity, religion, ability, or socio-economic status. Our curriculum reflects diverse perspectives, cultures, and experiences, creating empathy, tolerance, and respect for others. Through our inclusive practices and partnerships with families and the wider community, we strive to create a welcoming and supportive environment where every child can thrive and succeed.





# Learning Environment



We pride ourselves on offering a new, bright learning space designed to inspire and engage young minds. With a focus on safety, care, and active participation, our qualified staff provide a wealth of support and appropriate resources to meet the diverse needs of each child. Through the medium of play, children are encouraged to take ownership of their learning experiences. Our carefully planned play activities create a stimulating environment where development flourishes and imaginations soar. Both indoors and outdoors, children have the freedom to investigate, explore, and share in the wonders of books, music, and drama. Success is celebrated, and a positive attitude towards learning is cultivated at every turn. Our pre school boasts a bright classroom, a recently opened sensory room, and a multipurpose hall area shared with the wider school community. In this space, activities such as music, physical development, and circle time come alive. Our outdoor learning spaces are equally valued, recognising the importance of nature in nurturing young learners. Here, budding gardeners, explorers, scientists, chefs, storytellers and more find inspiration both indoors and out, catering to the diverse learning styles and interests of all our little learners.







# The Great Outdoors



At Balamill Little Learners, we believe that outdoor play is an essential part of every child’s development. Research shows that outdoor play helps cultivate physical, emotional, and social development in young children. In fact, according to the Department for Education, children who engage in regular outdoor activities demonstrate increased confidence, motor skills, and problem-solving abilities. It is essential that children get the opportunity to explore, imagine, and learn from the natural world around them.



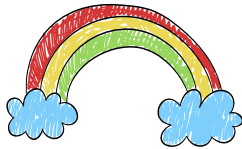
We are fortunate to have a well-equipped outdoor environment at Balamill Little Learners. Our garden area includes a pond, bug house, grassy spaces, woodland with trees, and a mud kitchen where children can fully explore nature. Outdoor learning is integral to our approach, and we provide children with a rich variety of experiences throughout the year, including wellie walks, pond dipping, nature exploration, and seasonal gardening activities.



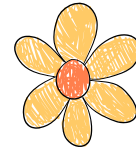
Children spend time outdoors every day at Balamill Little Learners, unless there is adverse weather. We make the most of our outdoor learning areas, providing opportunities for physical play, social interaction, and environmental education. Outdoor learning supports cognitive development, helps build resilience, and encourages curiosity, teamwork, and imagination.



We understand how vital it is to give children the space to explore, move freely, and engage with the natural world. At Balamill Little Learners, we nurture these experiences to ensure our little learners benefit from the joys and learning opportunities that the great outdoors offers.



# Curriculum



We follow the Northern Ireland Pre School Curricular Guidance to ensure that our curriculum is broad, balanced, and developmentally appropriate. This curricular guidance is used by the Education and Training Inspectorate (ETI) when evaluating the quality of provision and the outcomes for learners in all pre-school settings. We believe in providing children with opportunities to explore and learn through play and other experiences, allowing them to make choices and develop essential skills across various domains. Our curriculum focuses on the following key areas:

**Personal, Social, and Emotional Development:** We prioritise the well-being and social skills of our pupils, building positive relationships, self-confidence, and emotional resilience through activities that promote sharing, cooperation, and empathy.

**Physical Development and Movement:** We provide opportunities for children to develop their gross and fine motor skills, coordination, and spatial awareness through indoor and outdoor activities, including active play, games, and structured movement sessions.

**The Arts:** We encourage creativity, self-expression, and appreciation for the arts through activities such as painting, drawing, music, dance, drama, and storytelling, allowing children to explore their imagination and develop their artistic talents.

**Language Development:** We support language acquisition and communication skills through engaging activities such as storytelling, rhymes, songs, and conversations, creating a rich language environment that promotes vocabulary development, listening, and speaking skills.

**Early Mathematical Experiences:** We introduce foundational mathematical concepts such as counting, sorting, patterns, shapes, and measurements through hands-on activities, games, and manipulatives, creating mathematical thinking and problem-solving skills.

**The World Around Us:** We encourage curiosity and exploration of the world, including nature, science, technology, and the local community, through hands-on experiences, experiments, class trips, and discussions, nurturing children's understanding of their environment and creating a sense of wonder and curiosity about the world.

Additionally, our curriculum remains flexible to incorporate any other relevant topics or interests that emerge within the classroom, ensuring that learning remains meaningful, engaging, and responsive to the needs and interests of our pupils. Through our comprehensive and holistic approach to curriculum delivery, we aim to lay a solid foundation for lifelong learning and success in our pupils' educational journey.



# Record Keeping/Assessment



At Balnamill Little Learners, we prioritise thorough record-keeping and assessment to ensure the individual needs and progress of each child are met. Our staff are continuously engaged in observing, recording, and evaluating children's development as they engage in play and learning activities.

This valuable information guides us in planning suitable and enriching experiences tailored to their interests and developmental stages. We strongly encourage open communication and collaboration with parents, welcoming their input and feedback on their child's growth and experiences. To facilitate this partnership, we hold parent meetings twice a year, providing an opportunity for in-depth discussions about each child's progress.

Additionally, we utilise our school website and the school app as a convenient platform for recording children's achievements and activities throughout their time at pre-school. With parental approval, this offers an online learning journey for each child, allowing parents to stay informed, engaged, and involved in their child's educational journey by viewing and commenting on their experiences at Balnamill Little Learners.

We adhere strictly to General Data Protection Regulation (GDPR) guidelines to safeguard the privacy and security of personal data collected. Confidentiality is paramount, and we ensure that all information is handled securely, with clear protocols in place to protect the sensitive data of both children and families. We are committed to maintaining the highest standards of data protection, ensuring that the personal details and records of all children and families are managed in a professional and secure manner.





# Our Pre-School Family



## Pre-School Leader: Laura McComb



Laura McComb is the heart of Balnamill Little Learners. With nearly 20 years of experience in early years care and education, Laura brings unparalleled expertise and passion to our pre-school. Her dedication to nurturing young minds is evident in everything she does, from creating engaging learning activities to ensuring each child feels loved and supported. Laura is excited to embark on countless fun adventures in our classroom and is committed to making every day a joyful learning experience for your child.

## Deputy Leader: Joanne Wilkinson

Joanne Wilkinson, our Deputy Leader, has almost 10 years of experience in childcare. She supports Laura in all aspects of the pre-school's operations and is always on hand to assist children and staff alike. She is always ready with a smile and a creative play activity to keep the little ones engaged and excited about learning. Joanne is looking forward to many play-filled days and is dedicated to watching our little learners grow and thrive.



## The Importance of Our Pre-School Family



At Balnamill Little Learners, we believe in the power of a strong, supportive pre-school family. Our staff are caregivers and mentors who play a crucial role in the early stages of your child's development. We understand that early childhood is a pivotal time, and our dedicated team works tirelessly to create a loving and stimulating environment for all our little learners.

## Strengthening the Home-School Connection

We are committed to creating a strong link between school and home. We believe that a collaborative partnership with parents and guardians is essential for the holistic development of each child. Here's how we build this connection:

**Regular Communication:** We keep parents informed about their child's progress and any upcoming events or activities through newsletters, emails, and parent meetings.

**Family Involvement:** We host various events and activities that invite families to participate, creating opportunities for you to be actively involved in your child's education.

**Feedback and Support:** We value your feedback and are always here to support you with any concerns or questions you may have.

At Balnamill Little Learners, we are more than just a pre-school; we are a community. Our goal is to create a nurturing environment where children feel valued and families feel connected.



# Policies & Procedures



At Balnamill Little Learners, we are committed to providing a safe, nurturing, and stimulating environment for all children in our care. Our comprehensive set of policies and procedures is designed to ensure that every aspect of our pre-school operates smoothly and effectively, ensuring the highest standards of care and education. These policies not only guide our daily operations but also reflect our core values and commitment to excellence.

## Why Policies and Procedures Matter



**Safety and Well-being:** Our foremost priority is the safety and well-being of every child. Our rigorous health and safety policies, ensure that we are prepared for any eventuality and that children are cared for in a safe environment.

**Consistency and Fairness:** Having clear policies ensures that all staff members are on the same page regarding expectations and procedures. This consistency helps maintain fairness and equality in how children and their families are treated, ensuring everyone has a positive experience.

**Legal Compliance:** Our policies ensure that we comply with all relevant legislation and guidelines, including The Children (Northern Ireland) Order 1995, The Safeguarding Board Act (Northern Ireland) 2011, and the Data Protection Act 2018. Compliance with these regulations protects both the children and the pre school.

**Parental Involvement:** We believe in building a strong partnership with parents. Our policies, promote transparency and involve parents in the educational journey of their children. We encourage parents to review our policies to understand how we operate and how we handle various situations.

**Quality Education:** Our policies support our educational philosophy and curriculum goals. By following our structured approach, we ensure that children receive high-quality, consistent education tailored to their developmental needs.

We believe in transparency and accessibility. All our policies and procedures are available on our pre school website. Parents are encouraged to download and review them to stay informed about how we ensure the safety, well-being, and education of their children. By familiarising yourself with our policies, you can feel confident in the care and education your child receives at Balnamill Little Learners.

Our policies are reviewed regularly and may be changed from time to time. Parents will be notified of any changes to ensure they remain informed and updated about important practices.







# Positive Behaviour



At Balnamill Little Learners, we believe in building a positive and supportive environment where children can develop essential social and emotional skills while cultivating respect, responsibility, and self-discipline. Our approach to positive behaviour management is deeply rooted in research-based strategies and evidence-based practices, ensuring that every child receives the necessary support and guidance to thrive.

One of the cornerstones of our positive behaviour management strategy is the implementation of the Golden Rules. These rules, which are prominently displayed within our classroom and reinforced through daily interactions, provide clear expectations for behaviour and promote values such as kindness, and respect. By consistently modelling and reinforcing these rules, we create a culture of mutual respect and understanding where children feel empowered to make positive choices and take ownership of their actions.



Furthermore, our commitment to positive behaviour management extends beyond the classroom walls. We recognise the importance of collaboration and communication with parents and caregivers in supporting children's social and emotional development. To facilitate this partnership, we hold regular parent liaison meetings where we discuss each child's progress, strengths, and areas for growth. Additionally, we provide resources and guidance to parents on how they can reinforce positive behaviours and promote consistency between home and school environments.

In addition to our proactive approach to behaviour management, we also prioritise the use of evidence-based strategies for addressing challenging behaviours when they arise.

Our staff are trained in techniques such as positive reinforcement, redirection, and conflict resolution, allowing us to effectively support children in developing alternative, more positive behaviours. We also recognise the importance of individualised support and intervention, tailoring our approach to meet the unique needs and circumstances of each child.

To further enhance our positive behaviour management practices, we regularly monitor and evaluate our strategies to ensure their effectiveness. We collect data on behaviour incidents, observe trends, and solicit feedback from staff, parents, and children to identify areas for improvement. By continuously reflecting on our practices and making data-driven adjustments, we strive to create an environment where all children feel safe, valued, and supported in their social and emotional development.



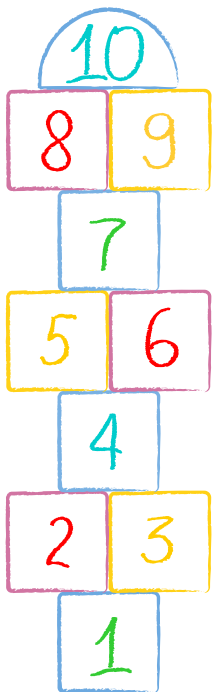
# Children With Additional Needs



At Balnamill Little Learners, we are committed to providing an inclusive environment where every child, regardless of their individual learning needs, feels welcomed, supported, and valued. We believe that every child deserves access to high-quality early education and to experience the same joy of learning and play as their peers.

Our approach to inclusivity is comprehensive and involves tailoring our methods and environments to meet the unique needs of each child. From the moment you apply, we actively encourage open discussions about your child's additional educational needs. This early dialogue helps us understand your child's individual requirements, including any support they may currently receive from external agencies.

## Our Approach to Supporting Children with Additional Needs

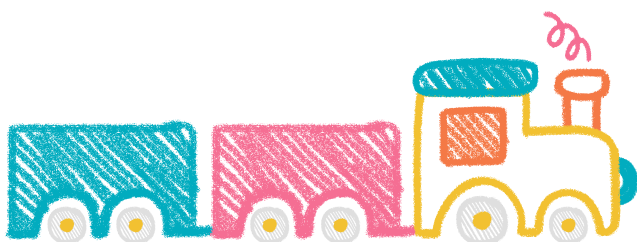


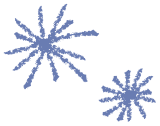
Our staff work closely with parents, and external agencies to design and implement tailored support strategies and are actively involved in ensuring that children with additional needs are fully integrated into daily activities. This means we make every effort to ensure that children with additional needs have access to the same materials, activities, and experiences as their peers.

With parental permission, we collaborate closely with outside agencies such as speech and language therapists, occupational therapists, educational psychologists, and health visitors to develop Personal Learning Plans (PLPs). These plans guide our staff in providing personalised support, tracking progress, and adjusting our methods to suit each child's development.

We understand that children with additional needs often require the involvement of specialist agencies. Our open and ongoing communication with these agencies ensures that the support provided at pre-school aligns with the care and guidance your child is receiving externally. We work in partnership with parents to ensure everyone is on the same page, aiming to create a seamless, consistent support network between home, pre-school, and external professionals.

A standout feature of Balnamill Little Learners is our fully equipped sensory room. This space provides a calm and engaging environment that promotes relaxation, emotional regulation, and concentration. The room is equipped with a range of sensory tools, such as soft lighting, tactile objects, and calming sounds, offering children a safe place to explore their senses and take a break from the main classroom when needed. The sensory room is an essential resource for children who may become overstimulated or need time to regulate their emotions, helping them return to the group setting feeling calm and refocused.





# Pastoral Care



At Balnamill Little Learners, we prioritise the well-being and safety of every child in our care through our comprehensive pastoral care approach. Our dedicated Safeguarding team, led by Mrs McComb (Pre-School Leader), ensures the implementation and adherence to our Safeguarding and Intimate Care policies. These policies are readily available for review on our school website and in our pre-school welcome pack, providing transparency and assurance to parents and guardians.



All staff and volunteers undergo rigorous background checks through Access NI, and clear guidelines are established to govern their interactions with the children. In instances where a child may require assistance with changing clothes due to a toileting accident, staff seek parental permission beforehand, as indicated on our Child Protection Permission Form.



To maintain the utmost standards of hygiene and safety, our staff follow current Education Authority guidelines, wearing appropriate personal protective equipment (PPE) such as gloves, aprons, masks, and visors during intimate care procedures. We prioritise the comfort and dignity of each child, ensuring they are aware of these measures and their importance. On their first day of pre-school, we introduce these practices to the children, emphasising the importance of familiarity and understanding in promoting a safe and nurturing environment for all.





# Health & Safety



Ensuring the health and safety of your child is our top priority at Balnamill Little Learners. We maintain a clean and healthy environment where children can thrive and flourish. Our staff members are trained in anaphylaxis management and the use of inhalers to address any medical emergencies effectively. It's crucial for us to be aware of any medical issues your child may have to ensure their safety and well-being. Please don't hesitate to reach out to us if you have any concerns or wish to discuss your child's medical needs.

To create a safe environment for all, we operate as a nut-free school. This measure helps protect both our staff and children, especially those with known allergies, from potential risks. We appreciate your cooperation in adhering to this policy.



In the event of accidents, our permanent staff members are paediatric first aid trained to provide immediate care and support. We will inform parents about any minor accidents at the time of collection, and in the case of a major accident, we will contact you immediately. Your child's safety and well-being are paramount, and we are committed to maintaining a safe and nurturing environment at Balnamill Little Learners.



# Safeguarding and Child Protection

At Balnamill Little Learners, the safety and well-being of every child in our care are our highest priorities. We understand that safeguarding and child protection are critical components of providing a nurturing and secure environment where children can thrive. Our commitment is to ensure that all children are protected from harm and can develop in a safe and supportive setting.

All our staff members are trained in safeguarding and child protection, ensuring they are equipped with the knowledge and skills necessary to identify and respond to concerns about a child's welfare. Regular training sessions keep our staff updated on the latest best practices and legislative requirements.

## Key Personnel



**Designated Child Protection Officer (DCPO):** Laura McComb

Laura oversees all safeguarding and child protection issues within the pre-school. She provides guidance and support to staff and liaises with external agencies to ensure that any concerns about a child's safety are addressed promptly and effectively.



**Deputy Designated Child Protection Officer (DDCPO):** Joanne Wilkinson

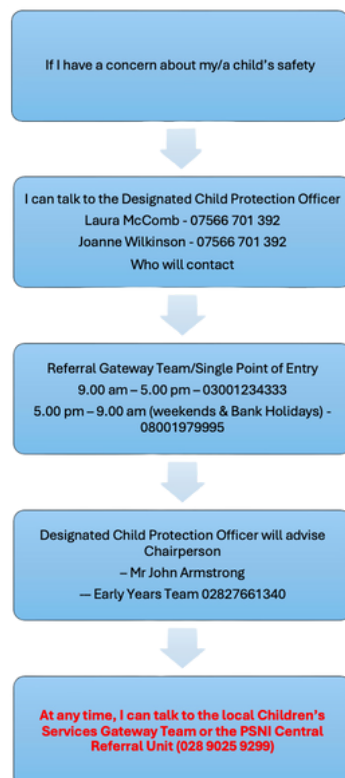
Joanne supports Laura in her role and assumes her responsibilities in her absence. She ensures that the safeguarding procedures are followed and assists in managing any child protection concerns that arise.

If a parent has a concern about safeguarding or child protection regarding their own child or another child, the following procedures apply in the order stated.

Balnamill Little Learners is dedicated to creating a secure and safe environment where children can thrive.

We believe that safeguarding is everyone's responsibility and are committed to working in partnership with parents and external agencies to ensure the safety and well-being of all our children.

## Procedures for Parents





# Admissions



At Balnamill Little Learners, we understand the transition from home to pre-school can be a significant step for both you and your child, often accompanied by feelings of anxiety and worry. That's why we strive to make this transition as smooth and trouble-free as possible. We recognise the importance of providing support and reassurance during this time of change.

To help alleviate concerns and familiarise families with our pre-school environment, we organise induction sessions at the beginning of the new school year. During these sessions, parents are encouraged to bring their children to sample the pre-school setting, meet other parents and children who will be in their class, and become acquainted with our facilities and routines.



These sessions provide an opportunity for families to ask questions, address any concerns, and start building connections within our school community.

As part of our admissions arrangements, all families who have been allocated a place with us will receive updated information about these induction sessions closer to the time. Our aim is to provide a welcoming and supportive environment where both you and your child feel comfortable and confident as you embark on this new chapter together at Balnamill Little Learners.

## School Uniform



We offer a school uniform option for children who wish to wear it. Our uniform consists of a blue school sweatshirt paired with a comfortable yellow polo shirt. These items are available for purchase directly from the school, providing families with convenient access to uniform essentials. While wearing the school uniform is optional, many children enjoy the sense of belonging and unity it brings to our preschool community. We believe that the uniform helps instill a sense of pride and identity among our pupils while building a cohesive and inclusive learning environment.





# Healthy Snacks



At Balnamill Little Learners, we prioritise promoting healthy eating habits among our pupils, recognising the significant impact it can have on their overall development and well-being. Research consistently shows that a balanced diet plays a crucial role in supporting children's growth, cognitive function, and behaviour.



Our pre-school ensures that appropriate healthy foods are readily available to the children, emphasising options rich in nutrients and low in added sugars and unhealthy fats. We offer choices like fresh fruits, vegetables, whole grain crackers, and dairy products, along with the option of milk or water for hydration. Water is also easily accessible to children within the classroom, allowing children to stay hydrated throughout the day.



We understand the importance of catering to children's individual dietary needs and allergies. Parents are encouraged to inform us of any allergies or dietary requirements their child may have, enabling us to accommodate their needs accordingly. Our staff members are trained to recognise and manage food allergies, and we take proactive measures to ensure the safety of all children in our care.

By providing healthy snacks and promoting nutritious eating habits, we aim to support children's physical health, cognitive development, and overall well-being at Balnamill Little Learners. We believe that instilling healthy eating habits from a young age sets the foundation for a lifetime of good health and wellness.



# Fees & Voluntary School Fund



An administration fee of £30.00 is charged for all children, whether they are funded or fee-paying. This fee is payable when your child is offered a place and must be settled before they begin attending. For families with multiple children, the administration fee for additional children is £10.00.

We believe that investing in early years education is vital, as it lays the foundation for children’s future success and well-being. Quality early childhood experiences have been shown to significantly impact children’s cognitive, social, and emotional development, setting the stage for lifelong learning and achievement. By contributing to our school funds, you are directly supporting the growth and development of our pre-school community and ensuring that we can continue to provide the best possible environment for our little learners.



Additionally, for pre-school funded places, a monthly donation of £20.00 would be greatly appreciated to help cover extra costs.



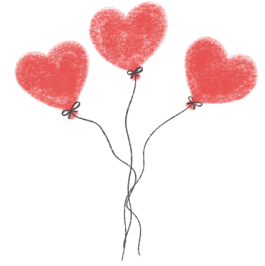
This contribution plays a vital role in enhancing the pre-school experience, supporting daily snacks and milk, baking activities, parties, visiting entertainers, treats and outings, and the overall operational costs of the pre-school.

Balnamill Little Learners are committed to offering high-quality early years education, and your continued support is vital to achieving this vision.





# Birthdays



At Balnamill Little Learners, we believe in celebrating the special milestones in each child's life, including birthdays. Birthdays are an opportunity for children to feel valued and cherished within our preschool community, creating a sense of belonging and connection.

We welcome families to mark their child's birthday by bringing in a cake to share with their classmates. However, to ensure the safety of all children, we kindly request that the cake be a shop-bought one in unopened packaging and nut-free. Additionally, please ensure the cake is not labelled with 'may contain traces of nuts'. This helps us maintain a safe environment for children with allergies.

If you plan to bring a cake, please inform a member of staff the day before so that we can adjust our snack plans accordingly. We want to ensure that every child can participate in the celebration while respecting any dietary restrictions or preferences.

We understand that some families may prefer their child not to have cake brought in by other pupils. If this is the case, please let us know at the beginning of the year, and we will ensure your child's preferences are respected.



Celebrating birthdays is more than just enjoying cake and treats. It's about creating lasting memories, building friendships, and acknowledging each child's uniqueness. Birthdays provide an opportunity to celebrate the individuality and growth of each child, reinforcing their sense of self-worth and importance within our preschool family.

By celebrating birthdays together, we strengthen our sense of community and create a warm and inclusive environment where every child feels loved, appreciated, and celebrated. At Balnamill Little Learners, birthdays are a time to shine, and we look forward to celebrating each and every one with our little learners.



# Pre Pre-School



Balnamill Little Learners are thrilled to announce the launch of our Pre Pre-School class! This service is specially designed for children in their Pre Pre-School year. Our Pre Pre-School offers a nurturing and stimulating environment where young learners can begin their educational journey in a supportive and caring setting.

## Type of Provision

Pre Pre-School



## Age Range

Children born between  
2nd July 21 - March 22

## Numbers

16



**"But for children, play is serious learning. Play is really the work of childhood, where their hands are as important as their minds."**  
Fred Rogers

Our Pre Pre-School program is designed to encourage curiosity, build social skills, and support the development of each child's unique abilities in a fun and engaging way.

Starting in January 2025, our Pre Pre-School sessions will run every Monday and Wednesday afternoon from 1:00 PM to 3:00 PM. The fee for these sessions is £10.00 per day. This fee covers the full range of activities and care provided during the sessions, ensuring that your child receives the best early years education.



# A Happy Start



Starting school marks a significant milestone in your child's life, and it's our commitment at Balnamill Little Learners to ensure that this transition is a happy and fulfilling experience for both you and your child. Our foremost priority is the safety, well-being, and development of every child in our care.

You can rest assured knowing that your child is in the hands of qualified staff who are dedicated to their growth and learning journey. Our staff members are always available to address any concerns or issues you may have in a confidential and timely manner. If you have any worries about your child's experience at the pre-school, we encourage you to reach out to us. Together, we can swiftly resolve any concerns and ensure your child's happiness and success.

At Balnamill Little Learners, we maintain an 'Open Door' policy, welcoming parents to visit, communicate, and collaborate with us. Whether you prefer to visit in person, contact us via telephone, or communicate through email, we are here to support you every step of the way. Feel free to arrange meetings as needed.

We encourage you and your child to embrace this opportunity to attend Balnamill Little Learners fully. By working together, we can strive to provide the best quality education and experiences for your child, laying the foundation for a bright future.



**Please note that while the information in this handbook is accurate at the time of printing, there may be changes affecting any of the matters discussed within it. The Pre-School Leader will ensure that any important updates or changes are communicated to you promptly.**

**Thank you for choosing Balnamill Little Learners as your child's educational partner. We look forward to embarking on this journey of growing, learning, and happiness together.**



**Balnamill Little Learners**

80 Balnamore Road  
Balnamore  
BALLYMONEY  
Co. Antrim  
BT53 7PT

[info@balnamillittlelearners.com](mailto:info@balnamillittlelearners.com)

07566 701 392